

Vlad Tanasescu

11/1 Dalgety Street
EH7 5UN
Scotland
United Kingdom

Born: March 1977
Nationality: Swiss

☎ +44 (0)78 214 31209
✉ vladtn@gmail.com
➡ <http://vladt.net>

English • *fluent*,
French • *native*,
Romanian • *fluent spoken*.

Research Statement

I studied continental philosophy and theory, then computer science and Geographical Information Systems. My research focusses on acquiring a better understanding of multi-scale spatial relations and dynamics, in order to improve visual and knowledge representation approaches for the geographic environment, leading to more meaningful geo-applications.

I am interested in questions regarding:

- the conditions for a digital representation of place,
- formal and informal geographic ontologies,
- the use folksonomies and geo-tagging in a geographic context,
- the relation between geographic information needs and objects,
- exploring and exploiting the increasingly large stream of digital geographic information.

Education

Expected: 2005-2011	<i>Ph. D. in Artificial Intelligence</i> (part time), KMi , The Open University, Milton Keynes, UK.
1999-2005	<i>MSc in Computer Science, and Engineering Diploma</i> , EPFL , Lausanne, Switzerland.
1997-1998	<i>Philosophy: French "License" and "Maîtrise"</i> , Paris X - Nanterre , Nanterre, France.

1995-1996 *Philosophy: French “DEUG”, Paris IV - Sorbonne*, Paris, France.

1995-1996 *Classes Préparatoires to ENS ULM, Lycée Fénelon*, Paris, France.

Professional Experience

2009-Present *Research Associate, School of Arts, Culture and Environment*, The University of Edinburgh, UK.

Researcher on the AHRC funded project titled *Cultures of Legibility: Emergent Urban Landscapes in Southeast Asia*. The project focusses on the representation of the complex forms of settlement that are emerging in the wet-rice agricultural landscapes surrounding the mega-city of Jakarta, Indonesia. It documents the limitations of official macro-scaled planning maps in recording these areas, and diagnoses alternative styles of representation that various private sector and community actors have developed.

Outputs include:

- Two international and national exhibitions, *Open City: Designing Coexistence*, at IABR in Rotterdam, and *Open city: Jakarta* in Indonesia,
- Collection and annotation of 93 video interviews and 965 questionnaires of inhabitants of the peri-urban Jakarta,
- Statistical analysis of a thousand questionnaires using qualitative methods and self-organizing maps (SOMs).

2005-2008 *Research Assistant and PhD Candidate, KMi*, The Open University, Milton Keynes, UK.

As research assistant, then as a student I worked on the DIP European FP6 project. While working towards my PhD dissertation titled *Web map based local search supported by Semantic Web Services and Associative Tagging*, my main contributions were to integrate semantic lifting and lowering mechanisms for Semantic Web Services (SWS) technology, which allowed to design and implement a prototype GIS-based emergency application using SWSs, in collaboration with *British Telecom* and the *Essex County Council*. The resulting application received an award and was finalist at the Semantic Web Challenge. The project was described as an “*outstanding success*” by reviewers, and the WP including the GIS application, as “*exemplary*”.

2002-2004 *Software Developer, VTVirtual Technology*, Vevey, Switzerland.

I contributed to new developments, including custom ERP applications for pharmacy and fitness centres as well as Web programming. I designed new applications in contact with clients and introduced new technologies in the company, such as version control frameworks, last generation programming languages and development tools. As the most senior

software developer in the company I took part in the training and supervision of new employees.

2002-2004 *Student Teaching Assistant*, **Federal Institute of Technology (EPFL)**, Lausanne, Switzerland.

As student teaching assistant I corrected copies, marked them, and interacted with students during 4 operating systems related courses.

2002-2003 *Web Programming Trainer*, **Ecole-Club Migros**, Lausanne, Switzerland.

Teaching Web programming (HTML, CSS, JavaScript and ASP) to 5 classes of 10 to 20 adult learners.

2000-2001 *Web and R & D Developer*, **BMC**, Le Mont-sur-Lausanne, Switzerland.

Web development and R & D at BMC, an IT Consulting and Service provider company. I was in charge of designing and developing the Web aspects of BMC's main product, the ERP *Arizona*. As part of this task I developed a secure card client registration system that was installed in 27 pharmacies, and a Web time management system installed in the same network. Other developments included a Web Service based B2B event registration system.

2001 *Software Development Intern*, **Unicable**, Lausanne, Switzerland.

During the summer of 2001, I worked as a member of the support team of the *Triple'A* account management application at Unicable, a Bank IT Service provider in Switzerland.

Journal Articles

Domingue, J., L. Cabral, S. Galizia, V. Tanasescu, A. Gugliotta, B. Norton, and C. Pedrinaci (2008). IRS-III: A broker-based approach to semantic Web services. *Journal of Web Semantics* 6(2), 109–132.

Gugliotta, A., J. Domingue, L. Cabral, V. Tanasescu, S. Galizia, R. Davies, L. Gutiérrez Villarías, M. Rowlatt, M. Richardson, and S. Stinčić (2008). Deploying Semantic Web Services-based Applications in the e-Government Domain. *Journal on Data Semantics X*, 96–132.

Conference Papers

Reitsma, F. and V. Tanasescu (2010). KnowledgeScapes: linking knowledge to spatial features. In: *Sixth international conference on Geographic Information Science (GIScience 2010)*. [url](#).

Cairns, S., R. Lucas, W. Mackaness, and V. Tanasescu (2009). Patch Urbanism in Southeast Asia: A fieldwork report. In: *Field/work, AHRA Conference*. [url](#).

Tanasescu, V., D. Roman, and J. Domingue (2009). Service Selection via Extreme Geotagging. In: *International Conference on Advanced Geographic Information Systems & Web Services (GEOWS 2009)*. [url](#).

Tanasescu, V. (2007). Spatial semantics in difference spaces. In: *Spatial Information Theory (COSIT 2007)*, pp.96–115. [url](#).

Tanasescu, V., A. Gugliotta, R. Davies, S. Stinčić, M. Richardson, M. Rowlatt, and B. Schreder (2007). Evaluation of a Semantic Web Services enabled GIS Emergency Planning system. In: *1st European Semantic Technology Conference (ESTC2007)*. [url](#).

Cabral, L., J. Domingue, S. Galizia, A. Gugliotta, V. Tanasescu, C. Pedrinaci, and B. Norton (2006). IRS-III: A Broker for Semantic Web Services based Applications. In: *5th International Semantic Web Conference (ISWC 2006)*. [url](#).

Gugliotta, A., V. Tanasescu, J. Domingue, R. Davies, L. Gutiérrez Villarías, M. Rowlatt, M. Richardson, and S. Stinčić (2006). Benefits and challenges of applying Semantic Web Services in the e-Government domain. In: *Semantics 2006, 28-30 Nov 2006, Vienna, Austria*. [url](#).

Tanasescu, V. and J. Domingue (2006). Toward user oriented semantic geographical information systems. In: *2nd AKT Doctoral Symposium*. [url](#).

Tanasescu, V., A. Gugliotta, J. Domingue, L. Gutiérrez Villarías, R. Davies, M. Rowlatt, M. Richardson, and S. Stinčić (2006). A Semantic Web Services GIS based emergency management application. In: *ISWC 2006, Lecture Notes in Computer Science, 4273*, pp.959–966. [url](#).

Tanasescu, V. and P. Wojciechowski (2005). Role-Based Declarative Synchronization for Reconfigurable Systems. In: *7th International Symposium on Practical Aspects of Declarative Languages (PADL 05)*. [url](#).

Tanasescu, V., W. Mackaness, S. Cairns, and R. Lucas. Understanding Desakota The Case Study of Jakarta. In: *GISUpdate at Edinburgh*.

Book Chapters

Gugliotta, A., J. Domingue, V. Tanasescu, L. Gutiérrez Villarías, R. Davies, M. Rowlatt, M. Richardson, and S. Stinčić (2008). “At Your Service: Service-oriented Computing from an EU Perspective”. In: ed. by E. Di Nitto, A.-M. Sassen, P. Traverso, and A. Zwegers. MIT Press. Chap. Enabling data, information, and process integration with semantic web services: from a new technology infrastructure to a compelling demonstrator, pp. 327–356. [url](#).

Tanasescu, V., A. Gugliotta, J. Domingue, L. Gutiérrez Villarías, R. Davies, M. Rowlatt, M. Richardson, and S. Stinčić (2007). “The Geospatial Web : how geobrowsers, social software and the Web 2.0 are shaping the network society”. In: ed. by A. Scharl and K. Tochtermann. *Advanced Information & Knowledge Processing*. London, UK: Springer. Chap. Geospatial data integration with Semantic Web services: the eMerges approach, pp. 247–256.

Project Deliverables

Gugliotta, A., V. Tanasescu, J. Domingue, L. Gutiérrez Villarías, R. Davies, M. Rowlatt, J. Bryant, S. Stinčić, and M. Richardson (2006). *SWS Enhanced GIS prototype (IRSIII) Report Final version V2*. Tech. rep. DIP, D9.14. [url](#).

Gugliotta Alessio and Tanasescu, V., J. Domingue, L. Gutiérrez Villarías, R. Davies, M. Rowlatt, J.

Bryant, S. Stinčić, and M. Richardson (2006). *SWS Enhanced GIS prototype (IRSIII) v 2.0*. Tech. rep. DIP, D9.12. [url](#).

Gutiérrez Villarías, L., R. Davies, M. Rowlatt, J. Bryant, A. Gugliotta, V. Tanasescu, S. Stinčić, and M. Richardson (2006). *SWS Enhanced GIS prototype (IRSIII) v 1.0*. Tech. rep. DIP, D9.11. [url](#).

Arroyo, S., J. de Bruijn, C. Bussler, L. Cabral, J. Domingue, S. Galizia, M. Moran, E. Motta, M. Stollberg, V. Tanasescu, and M. Zaremba (2005). *Second set of external WSMO tutorials*. Tech. rep. DIP, D14.1. [url](#).

Arroyo, S., J. de Bruijn, C. Bussler, L. Cabral, J. Domingue, S. Galizia, M. Moran, M. Stollberg, V. Tanasescu, and M. Zaremba (2005). *Online WSMO tutorials*. Tech. rep. DIP, D14.2. [url](#).

Bussler, C., L. Cabral, E. Cimpian, J. Domingue, S. Galizia, A. Haller, M. Kerrigan, M. Moran, B. Norton, C. Pedrinaci, D. Roman, B. Sapkota, O. Shafiq, M. Stollberg, V. Tanasescu, and M. Zaremba (2005). *Fifth set of external WSMO tutorials*. Tech. rep. DIP, D14.1e. [url](#).

Gugliotta, A., J. Domingue, V. Tanasescu, L. Gutiérrez Villarías, M. Rowlatt, and R. Davies (2005). *GIS WSMO descriptions v1.0*. Tech. rep. DIP, D9.10. [url](#).

Nixon, L., E. Paslaru, M. Zaremba, E. Dente, R. Lara, W. Binder, I. Constantinescu, R. Jurga, V. Schickel-Zuber, V. Tanasescu, M. Carman, L. Penserini, M. Pistore, and E. Cimpian (2004). *State of the art of current Semantic Web Services initiatives*. Tech. rep. KnowledgeWeb, KWEB/2004/WP2.4ID1/v1. [url](#).

Invited Workshop Participation

Tanasescu, V. (2007). *Beyond Mashups: the New Challenges of SWS Based Geospatial Applications*. Tech. rep. 2nd Workshop on Challenges and Promise of the Semantic Web, Nottingham Trent University, Nottingham, UK.

Tanasescu, V. (2007). *eMerges + SW Challenge: a Thrilling Semi Success Story*. Tech. rep. European GeoInformatics Workshop, National e-Science Centre, Edinburgh, UK.

Workshop Papers

Dietze, S. and V. Tanasescu (2009). Spatial groundings for meaningful symbols. In: *AISB 2009 Conference, 6-9 Apr 2009, Edinburgh, UK*. [url](#).

Tanasescu, V. (2008). Spatiotemporal Metaphors and Internet Technologies. In: *Workshop: First International Workshop on Blending Physical and Digital Spaces on the Internet, in conjunction with the FIS 2008 Symposium, Vienna, Austria*.

Tanasescu, V. and J. Domingue (2008). A Differential Notion of Place for Local Search. In: *Workshop: LocWeb 2008, First International Workshop on Location and the Web in conjunction with the WWW 2008 Conference, Beijing, China*.

Tanasescu, V. and J. Domingue (2008). Towards General Spatial Intelligence. In: *Workshop: ECAI-08 Workshop on Spatial and Temporal Reasoning, in conjunction with the ECAI 2008 Conference, Patras, Greece*. [url](#).

Tanasescu, V. (2007). Differences + Triple Spaces = Active Triple Spaces. In: *Workshop: New forms of reasoning for the Semantic Web: scalable, tolerant and dynamic (LarkC)*, in conjunction with the ISWC 2007 Conference, Busan, Korea.

Tanasescu, V. and O. Streibel (2007). Extreme Tagging: Emergent Semantics through the Tagging of Tags. In: *Workshop: International Workshop on Emergent Semantics and Ontology Evolution (ESOE 2007)*, in conjunction with the ISWC 2007 Conference, Busan, Korea.

Gugliotta, A., R. Davies, L. Gutiérrez Villarías, V. Tanasescu, J. Domingue, M. Rowlatt, M. Richardson, and S. Stinčić (2006). Enhancing Data and Processes Integration and Interoperability in Emergency Situations: a SWS based Emergency Management System. In: *First International Workshop on Applications and Business Aspects of the Semantic Web (SEBIZ 2006)*, 6 November 2006, Athens, Georgia, USA.

Tanasescu, V., A. Gugliotta, J. Domingue, L. Gutiérrez Villarías, R. Davies, M. Rowlatt, and M. Richardson (2006). A Semantic Web GIS based Emergency Management System. In: *Workshop: Workshop on Semantic Web for eGovernment, 3rd Annual European Semantic Web Conference (ESWC 2006)*, Budva, Montenegro.

Tanasescu, V., A. Gugliotta, J. Domingue, L. Gutiérrez Villarías, R. Davies, M. Rowlatt, M. Richardson, and S. Stinčić (2006). Spatial integration of Semantic Web Services: the e-Merges approach. In: *Terra Cognita 2006*, 6 November 2006, Athens, Georgia, USA. [url](#).

Tanasescu, V., J. Domingue, and L. Cabral (2004). OCML ontologies to XML schema lowering. In: *First AKT Workshop on Semantic Web Services (AKT-SWSo4)*, 8 Dec 2004, Milton Keynes, UK. [url](#).

Software Presentations

Tanasescu, V., W. Mackaness, S. Cairns, and R. Lucas (2009). Cultures of Legibility Web Map. In: *Ordnance Survey Geospatial Mashup Challenge, GISRUUK 2009*. [url](#).

Tanasescu, V., A. Gugliotta, J. Domingue, L. Gutiérrez Villarías, R. Davies, M. Rowlatt, M. Richardson, and S. Stinčić (2006). Presentation of eMerges. In: *Semantic Web Challenge, The 5th International Semantic Web Conference (ISWC06)*, Athens, Georgia, USA.

Tanasescu, V. and J. Domingue (2006). Presentation of a Semantic Google Maps Based Emergency Management Graphical User Interface. In: *2nd Workshop on Scripting for the Semantic Web, Colocated with ESWC 2006*, Budva, Montenegro.

Poster Presentations

Tanasescu, V. (2007). Presentation of eMerges. In: *AKT Project final review in Southampton, UK*.

Other Publications

Tanasescu, V. (1999). Hana-bi, violente solitude. In: *Hors-champ, revue Suisse de Cinéma* no. 4.

Other Event Attendance

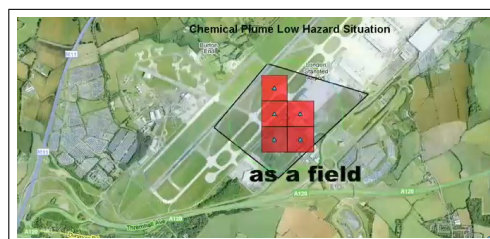
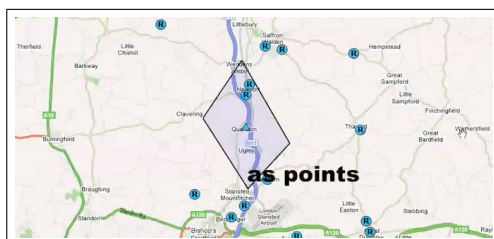
- 2007 Fifth European Summer School on Ontological Engineering and the Semantic Web (SSSW-2007), Cercedilla, Spain.
- 2006 European GeoInformatics Workshop, e-Science Institute, Edinburgh, UK.
GIScience 2006 Conference, Munster, Germany.
Vespucci Summer Institute on GI Science 2006, Fiesole, Italy.
Presentation to Open University Malaysia (OUM) representants during their European tour.

Grants & Awards

- 2008 WWW2008 Conference Student Travel Award (out of 15).
- 2007 Prize for the **project** on *Tagging the Tags* at the Semantic Web Summer school held in Cercedilla, Spain. The project was extended and presented as a workshop paper at ESOE 2007.
COSIT'07 Conference PSMA Australia Limited Student Travel Award (out of 5)
- 2006 Finalist at the **Semantic Web Challenge**, collocated with the International Semantic Web Conference 2006 (ISWC'06), Athens, GA, USA.
Winner of the **Semantic Scripting Challenge** of the 2nd Workshop on Scripting for the Semantic Web, collocated with ESWC 2006.
Honourable Mention, for the paper and the quality of presentation, 2nd AKT Doctoral Symposium, Aberdeen University, UK, 23 January 2006.
Open University Student scholarship to attend the Vespucci Summer Institute.

Software Projects

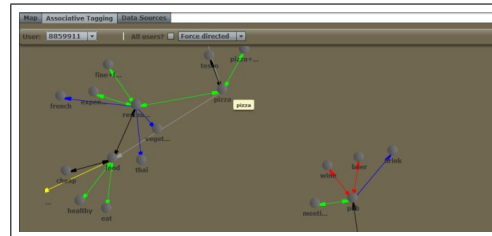
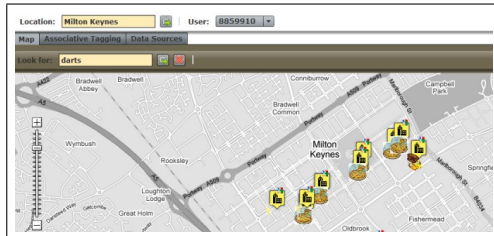
eMERGES



eMerges originates in a case study on integration of emergency relevant spatial data through Semantic Web Services, and was used as a showcase in the IST-funded DIP project.

bit.ly/vt-emerges • GWT • IRS-III • Affordances • Ontologies • Context

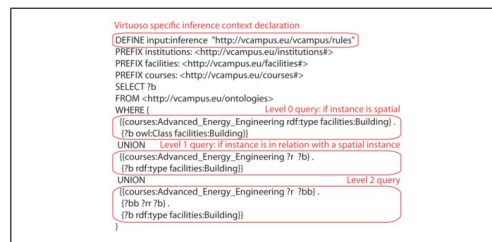
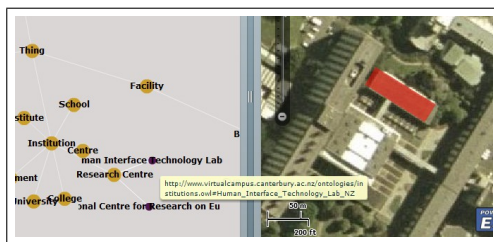
eMERGESX



eMergesX is an evolution of eMerges as an adaptive service based GIR application retrieving data according to a user-defined folksonomy, based on Associative Tagging.

bit.ly/vt-emergesx • Google Maps API • Google Apps Engine • Wordnet

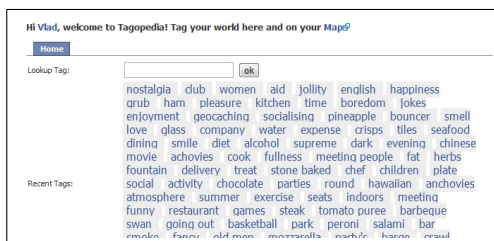
KSPACES



A dual-paned browser, one pane presenting the ontology browser and the other spatial data. These two panes are linked such that the selection of concepts in the ontology retrieves and highlights the associated spatial data.

bit.ly/vt-kspaces • ESRI Map API • Flash/Flex UI • RDF data • Virtuoso triple-store • PostGIS

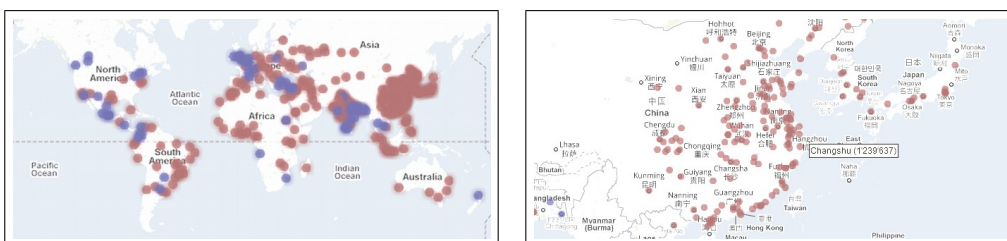
TAGOPEDIA



Tagopedia is a Facebook application allowing to annotate and geolocalise tags. Between tags, a small set of cognitive and spatiotemporal relations is used which allow to draw inferences about the geographic environment.

bit.ly/vt-tagopedia • Facebook API • PHP • Javascript • RDF data • Talis triple-store

BIGCITIES



An interactive visualisation of the cities of the world with more than one million inhabitants. The visualisation uses UN data: “Total and urban population by sex: 1999-2008” and has been designed in support of an argument regarding the growing importance of aspiring megacities.

bit.ly/vt-bigcities • Flash/Flex UI • Google Maps API • Geonames VBA macro

CULTURES OF LEGIBILITY WEB MAP



A tool allowing to record places described through keywords (tags) as well as routes between places with their frequencies and the associated activity. The application was presented at the Ordnance Survey Geospatial Mashup Challenge collocated with GISRUUK 2009.

bit.ly/vt-colwebmap • Google Maps API • Flash/Flex UI • RDF data • Talis platform • Geotagging with geohash

Other Software and Visual Projects

More software and visual projects (film, libraries, media installations,...) are presented at <http://vladt.net/portfolio>.

Academic Event Organisation

- 2010 OneSpace 2010 - Third International Workshop on Blending Physical and Digital Spaces on the Internet, collocated with the Future Internet Symposium 2010, Berlin, Germany.
- 2009 OneSpace 2009 - Second International Workshop on Blending Physical and Digital Spaces on the Internet, collocated with the Future Internet Symposium 2009, Berlin, Germany.
- 2008 OneSpace 2008 - First International Workshop on Blending Physical and Digital Spaces on the Internet, collocated with the Future Internet Symposium 2008, Vienna, Austria.

Academic Services

- 2011 Third International Conference on Advanced Geographic Information Systems, Applications, and Services (GEOProcessing 2011) [Technical PC]
- 2010 Journal of Web Semantics [Review]
Journal of Selected Topics in Earth Observations and Remote Sensing [Review]
International Semantic Web Conference (ISWC) [Metadata Committee]
Extended Semantic Web Conference (ISWC) [Systems Demos and Posters Committee]
Workshop on Scripting for the Semantic Web (SFSW) [PC]
- 2009 International Conference on Autonomic and Autonomous Systems (ICAS) [PC]
International Conference on Advanced Geographic Information Systems & Web Services (GEOWS) [Publicity Chair & PC]
International Conference on Internet and Web Applications and Services (ICIW) [PC]
International Workshop on the Role of Services, Ontologies, and Context in Mobile Environments (RoSOC) [PC]
Workshop on Scripting for the Semantic Web (SFSW) [PC]
- 2008 International Conference on Internet and Web Applications and Services (ICIW) [PC]
International Workshop on the Role of Services, Ontologies, and Context in Mobile Environments (RoSOC) [PC]
Web Services and the Semantic Grid (WSSG) [PC]
Workshop on Scripting for the Semantic Web (SFSW) [PC]
Mobile Services-oriented Architectures and Ontologies (MoSO) [PC]
- 2007 International Workshop on the Role of Services, Ontologies, and Context in Mobile Envi-

ronments (RoSOC) [PC]

Workshop on Scripting for the Semantic Web (SFSW) [PC]

International Conference on Internet and Web Applications and Services (ICIW) [PC]

Mobile Services-oriented Architectures and Ontologies (MoSO) [PC]

University Involvement

- 2008 Co-organized the Open-University filmmaking challenge.
- 2007-2008 Open University Student Association Representative (Research Students)
- Animation of seminars for the Open University Participatory Video Research Circle
- Internal Seminars Coordinator, Knowledge Media Institute
- Developed a social network website, the [Slog](#), allowing cross-world blogging for [Schome](#), a Second Life based education research effort
- 2006-2007 Secretary of the Society of Open University Potholing Club
- Treasurer of the Open University Martial Arts Club

Training

- Using EDINA Digimap, half day
- Using ArcGIS, half day
- Introducing Management, full day
- Entreprise and Business Skills, four days, residential
- Introduction to MBTI Personality Type
- Time management, full day
- Assertiveness, full day

Community Involvement

- 2010-2011 Treasurer of the Edinburgh Stammering Association.
- 2009-2010 Chair of the Edinburgh Stammering Association.

Other Activities

Aikido, Caving/Potholing, Filmmaking.